

Capacitance type level switch

Sanitary electrode

Food

Chemistry

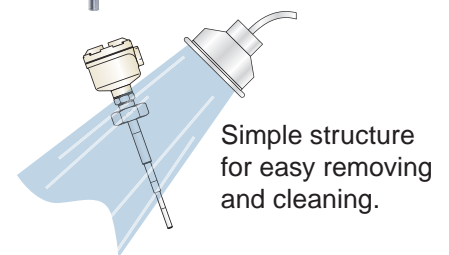
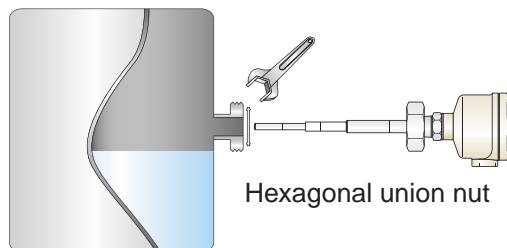
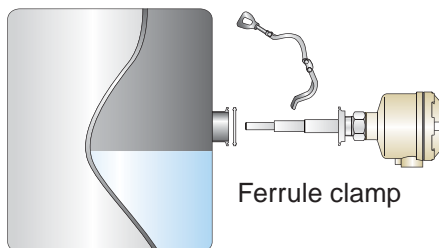
Convenience to the real site
which needs cleaning frequently

B1.IF

B1.IN

■ Benefits of sanitary

1. Easy to remove



2. Surface finishing

Buff finishing

Electrolytic polishing



Carried out the buff finishing on all
detection parts for sanitation
(Additionally, the electrolytic polishing available)



3. Light



Flange type

Compact and light weight, unlike a heavy flange



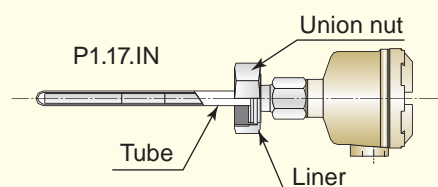
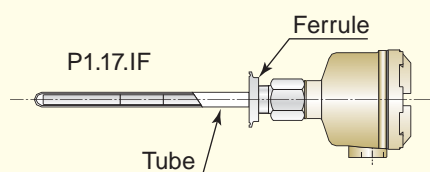
Sanitary type

Easy to
bring

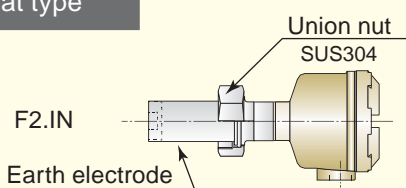
■ Composed of various electrodes for diverse applications

Adaptable a lot of electrode types according to your applications

Tubing type



Flat type



Pipeline type

