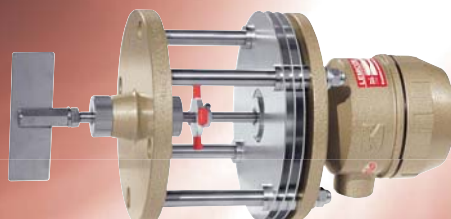
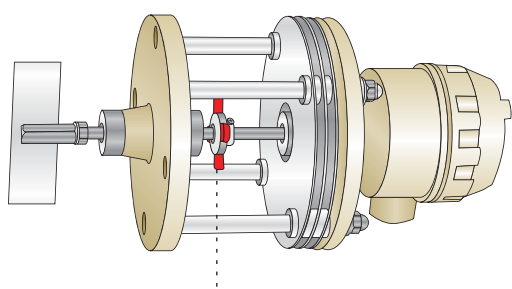


### Heat resistant type

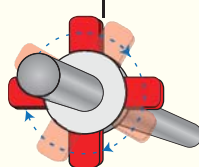


MAX.  
250°C

Stable measurement even under high temperature condition!



Rotation check plate



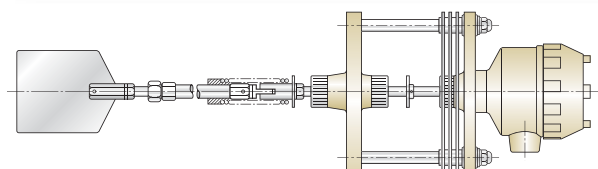
Possible to check the operation status of level switch far away from the tank.

Rotation check plate is moving → Empty tank  
Rotary check plate is stopped → Full tank

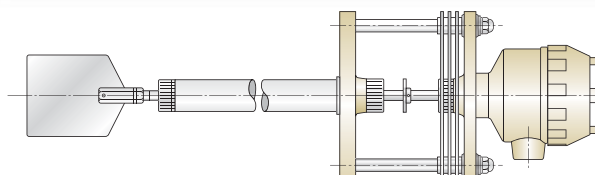


Deal in a various specifications such as shaft-length adjustable type, protective tube extension type, etc.

### Shaft-length adjustable type

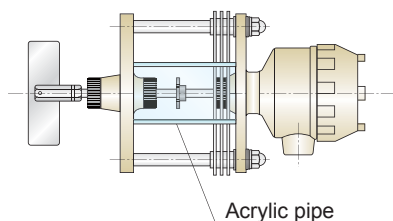


### Protective tube extension type



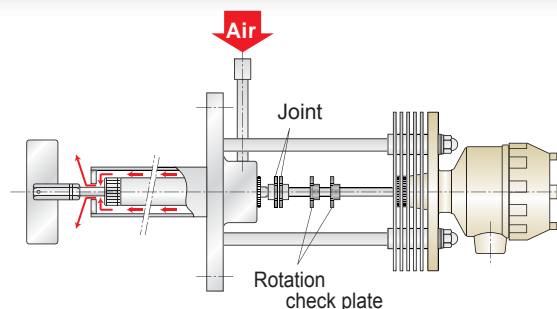
### Other special specifications

#### With acrylic pipe specification



Protect the shaft and rotation check plate

#### Air cooling specification



By supplying with air to detection part, prevent from seal clogging and bring cooling effect