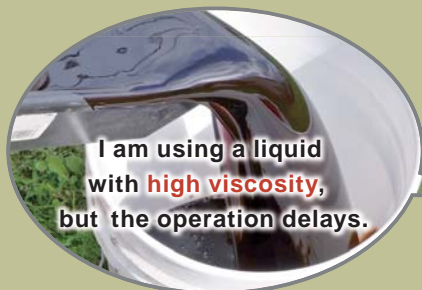
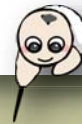


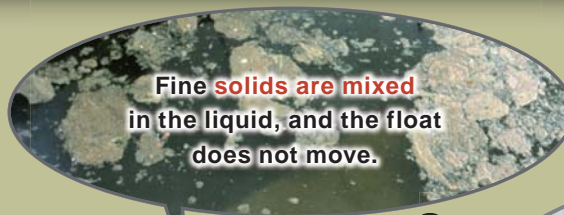
Vertical float type level switch

Measures against viscous liquids and solids in liquids.

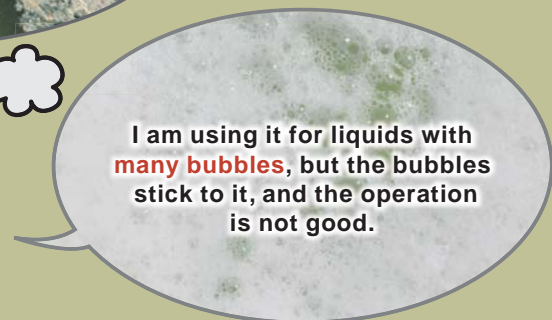
Are you having trouble with this when using a vertical float switch?



I am using a liquid with **high viscosity**, but the operation delays.



Fine **solids** are mixed in the liquid, and the float does not move.

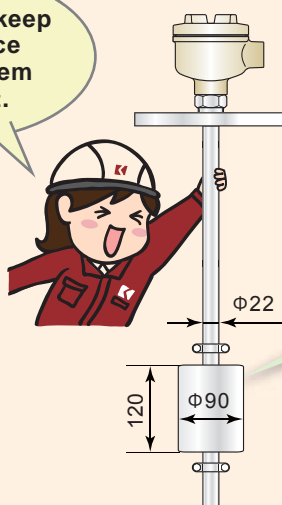


I am using it for liquids with **many bubbles**, but the bubbles stick to it, and the operation is not good.

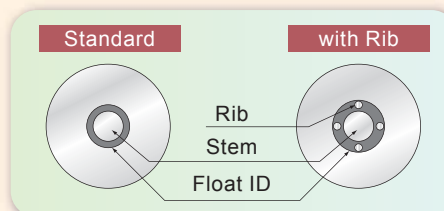


In such a case, please use **the ribbed float!**

It's a rail to keep some space between stem and float.



What is a rib?



- KF-312 (Float Φ90×120 Stainless steel)
- KF-342 (Float Φ90×120 PVC)
- KF-372 (Float Φ90×120 HTPVC)

Rib prevents float malfunction caused by surface tension orbiting solid.