

Light and compact!
Pinpoint measurement with non-contact!

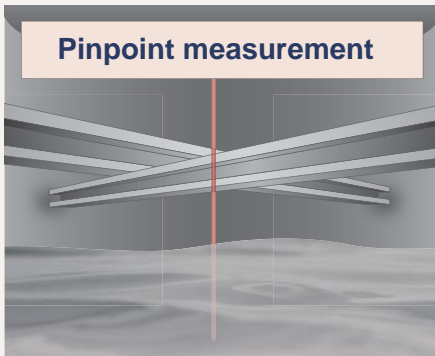
No adjustment required

LASER-RANG-S Laser Level Meter



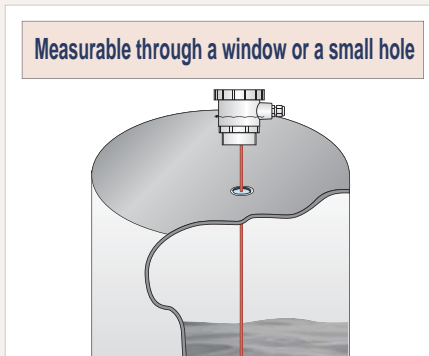
■ Advantages

Pinpoint measurement



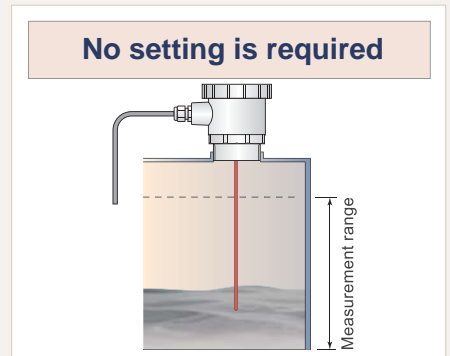
Laser wave length is so short and the beam angle is so small that obstacles such as girders can be avoided and pinpoint measurement can be conducted.

Measurable through a window or a small hole



Measurable from outside the tank if it has a window or a small hole.

No setting is required



Adjustment after the installation is not required since the measurement range setting is already finished before factory shipping.

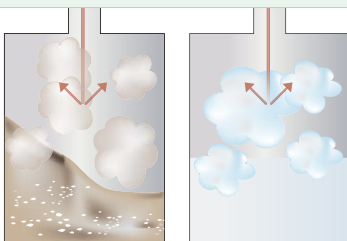
■ Standard specification

Measurement range : 0.2~10m (Depending on the applications)
Output : DC4~20mA Load resistance 300Ω or less
Cable : 5m included
Temperature : -10~50°C (No freezing, no condensation)
Protection rating : Equivalent to IP43

Body material : PVC
Laser specification : Class 2 Semiconductor laserbeam
620~690nm 0.95mWmax
Power supply : DC24V ±10%
Power consumption : 150mA

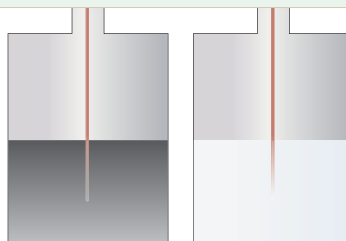
■ Unmeasurable application

Dust·Vapor



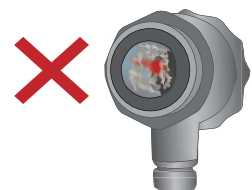
Unmeasurable since black or transparent color can absorb the laser beam

Color of material



Unmeasurable since the laser is attenuated or reflected due to the dust and the vapor.

Dirtiness or condensation on the transmitter surface



Unmeasurable if there is any dirtiness or condensation on the transmitter surface.